



A Tenneco Company


www.gates.com/europe

# 019

16/05/07

# Technical Bulletin

## Selecting timing belts/kits for the Renault 1.9D engine

<b>GATES REFERENCE:</b>	5212/XS, 5305XS, 5484XS, 5485/XS, 5486XS, 5561XS and their kits.	
<b>MAKE:</b>	Mitsubishi, Opel/Vauxhall, Renault, Volvo	
<b>MODEL:</b>	Various models with Renault 1.9 Diesel engine	
<b>ENGINE:</b>	1.9 Diesel	
<b>ENGINE CODE:</b>	Various engine codes	

Through our customer contacts, we still experience that errors are being made in the selection of the PowerGrip® timing belt/Kit for the Renault 1.9 D engine, mounted in several makes and models.

Some of these applications are running a timing belt with 132 teeth (our belt 5552XS), but most of the vehicles have a belt with either 151 or 153 teeth, and this is where most issues occur.

Just counting the number of teeth is not enough to find the correct belt: for the 151 teeth applications, there are 2 options: 5305XS or 5484XS for the 153 teeth applications, there are no less than 7 different options: 5051, 5212, 5212XS, 5485, 5485XS, 5486XS, 5561XS.

These belts may have different widths, different profiles or different constructions, depending on the application.

Here is some information to help you make the correct selection:

First of all, and in the case that the OE reference of the old (removed) belt can still be read, the attached cross-reference list will give you the correct Gates replacement belt.

If the branding is not readable anymore, it is vital to know the complete engine code of the vehicle (e.g. F9Q780). This engine code can be found on the engine block, in between the oil filter and the flywheel (Fig. 1).

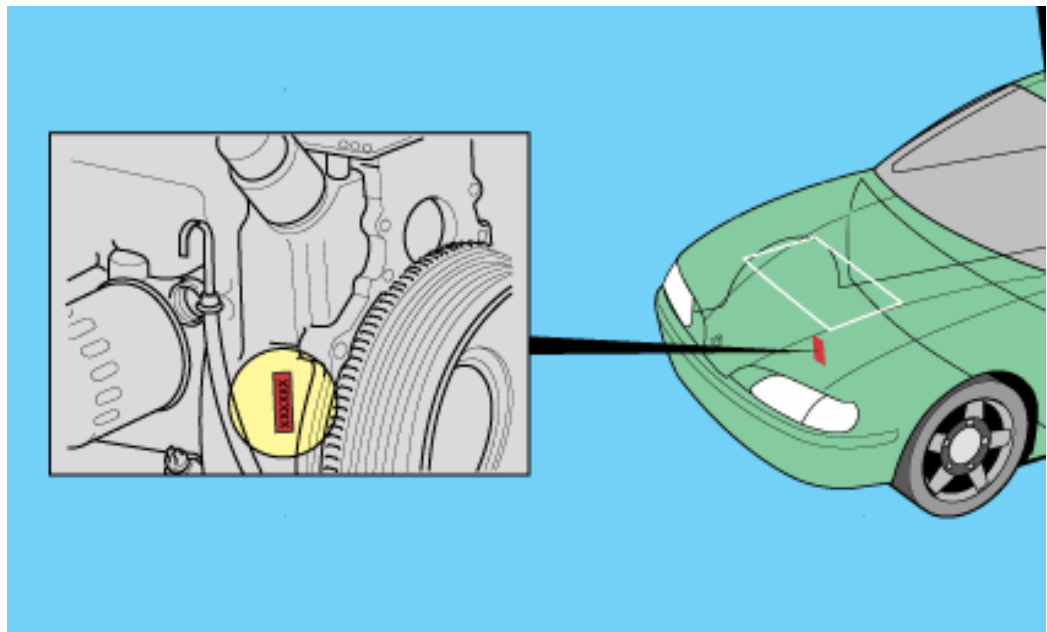


Fig. 1



A Tenneco Company

www.gates.com/europe

# 019

16/05/07

# Technical Bulletin

Consult the Gates Drive Systems Catalogue E/70107 to find the correct belt for your engine type. Or better still, for the latest up to date information, visit our web catalogue : [www.gatesautocat.com](http://www.gatesautocat.com).

On some of the applications with 151 teeth, even for the same engine type, a certain vehicle could have either of the belts 5305XS or 5484XS. In this case, the break point between the 2 belts is a date. This date is of course the production date of the car. But when a car was sold within the year after this break date, there could be doubt as to which belt one has to use - belts look very alike and therefore some customers may think they are exactly the same.

For this situation there is a visual difference that will allow one to make the distinction (see Fig. 2).

When you look at the 2 belts from the side, the tooth of the 5305XS goes down straight starting from the base, while the tooth of the 5484XS has a more slanting side. As a result, the tooth base of the 5484XS (Fig. 3 green line) is wider than the one from the 5305XS (Fig. 3 red line).

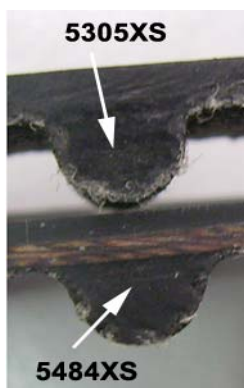


Fig. 2

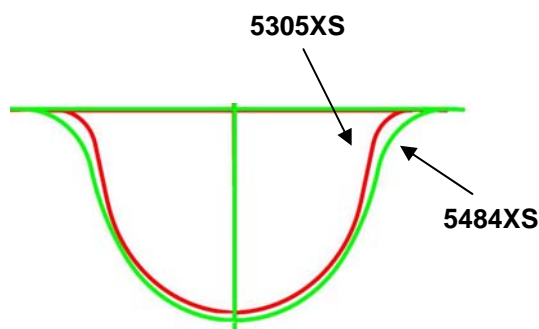


Fig. 3

We hope this information will avoid further mistakes in the future.

See also Technical Bulletin # 017 on Volvo models with these 1.9 diesel engines.

Visit our web catalogue : [www.gatesautocat.com](http://www.gatesautocat.com)